

Holliday Park Playground DESIGN WORKSHOP

February 7-9, 2023
PUBLIC CONCEPT PRESENTATION



An aerial photograph of Holliday Park in Indianapolis, featuring a large green field, a winding river, and surrounding residential areas. The image is overlaid with a semi-transparent green filter.

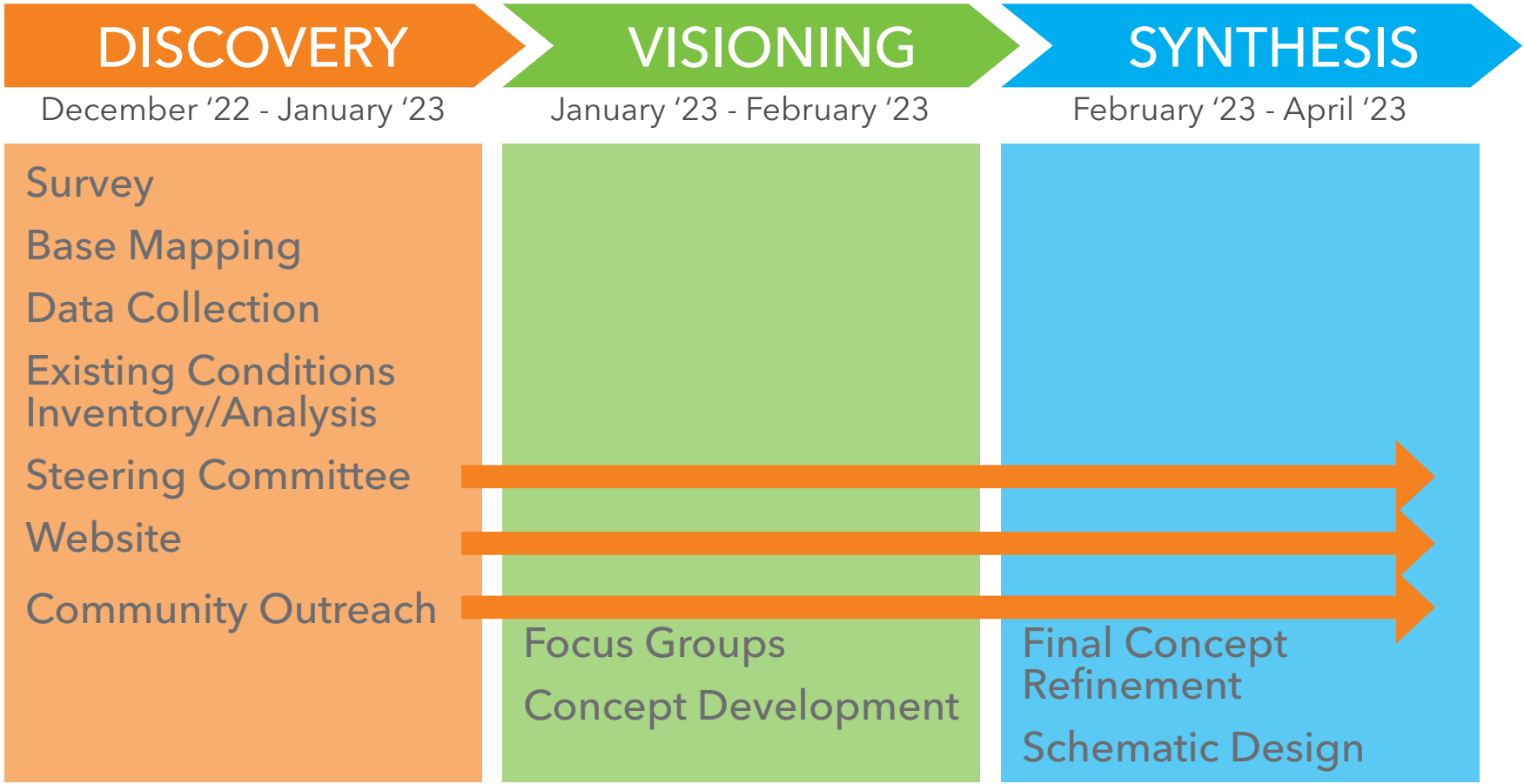
HOLLIDAY PARK PLAYGROUND

Project Purpose

The Holliday Park Foundation, in coordination with the City of Indianapolis Department of Public Works/Indy Parks, is seeking to add a **new playground and gathering space** that will serve as an **inclusive, engaging, versatile, and vibrant commons**.

HOLLIDAY PARK PLAYGROUND

Project Schedule

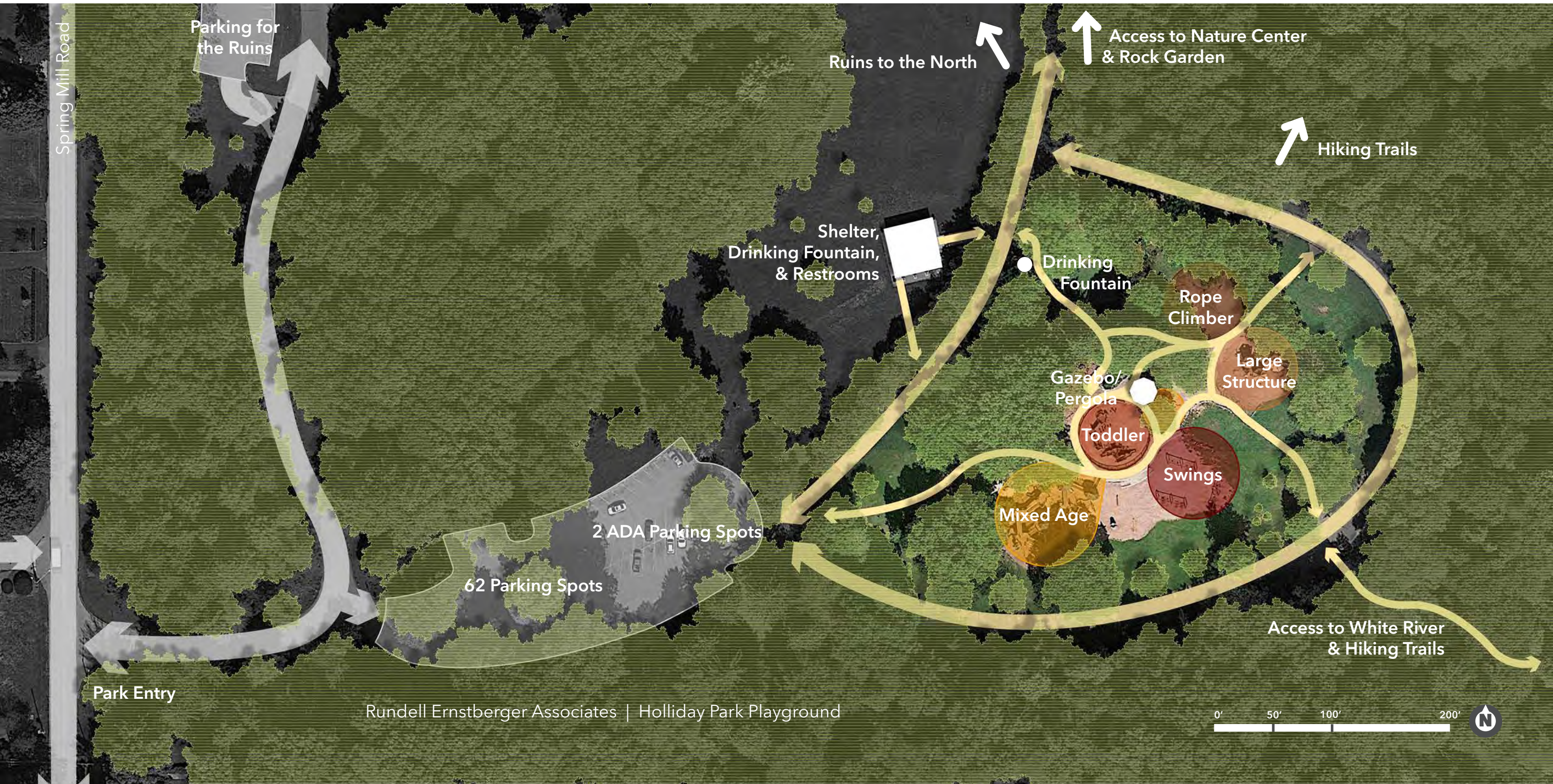


SITE INVENTORY & ANALYSIS



SITE INVENTORY & ANALYSIS

Inventory



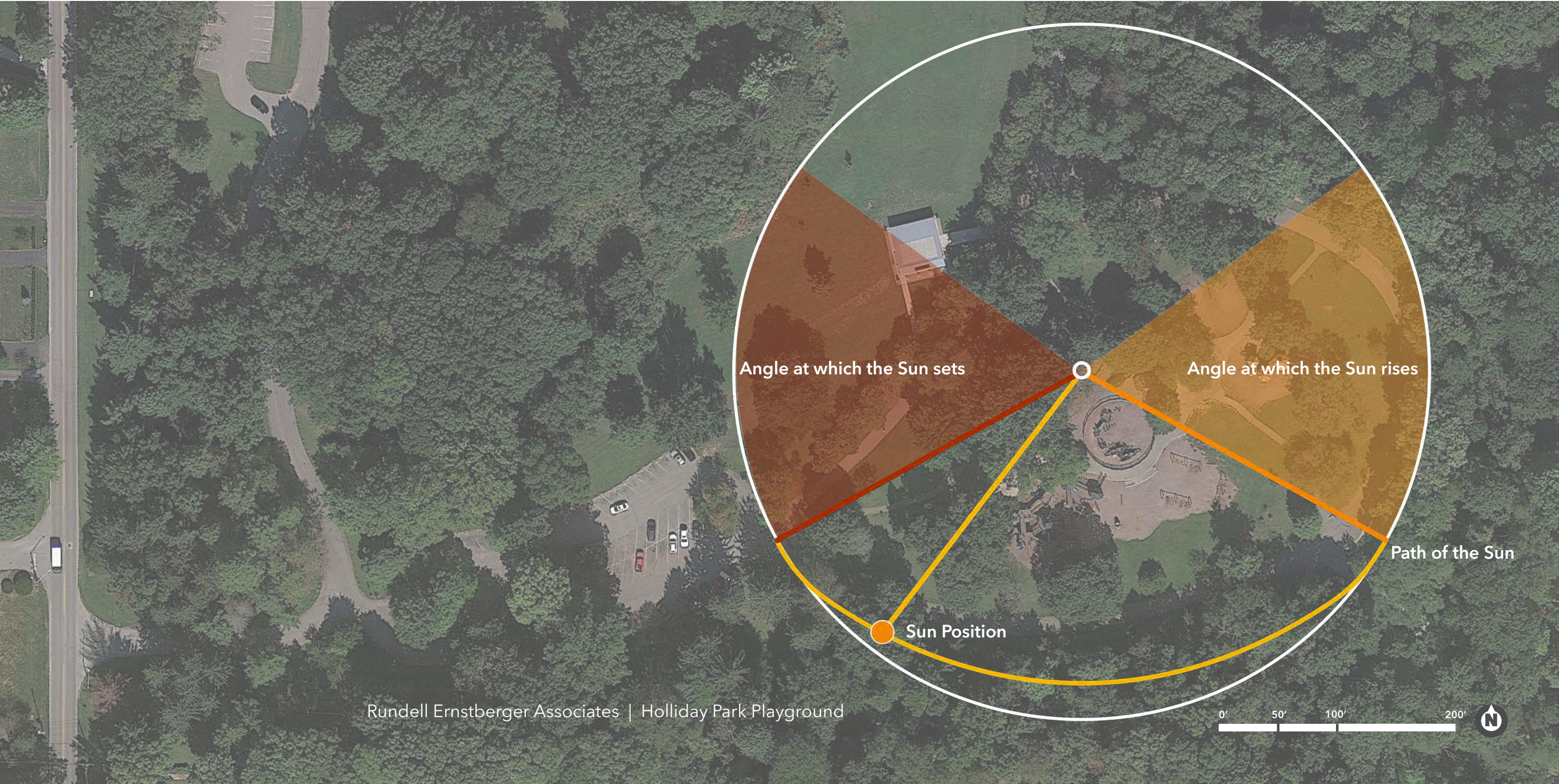
SITE INVENTORY & ANALYSIS

Topography



SITE INVENTORY & ANALYSIS

Sun/Shade



SITE INVENTORY & ANALYSIS

Play



SITE INVENTORY & ANALYSIS

Play



SITE INVENTORY & ANALYSIS

Play



SITE INVENTORY & ANALYSIS

Hardscape



ASPHALT PATH ENTRY TO PLAYGROUND



ASPHALT PERIMETER PATH



PAVER PATHWAYS



CONCRETE WALKWAYS



SITE INVENTORY & ANALYSIS

Details & Accessories



GRANITE CURBS& CHAINS



SCULPTURAL INSTALLATION



DEDICATION PLAQUE



WAYFINDING



COBBLE RETAINING WALLS



SEATING



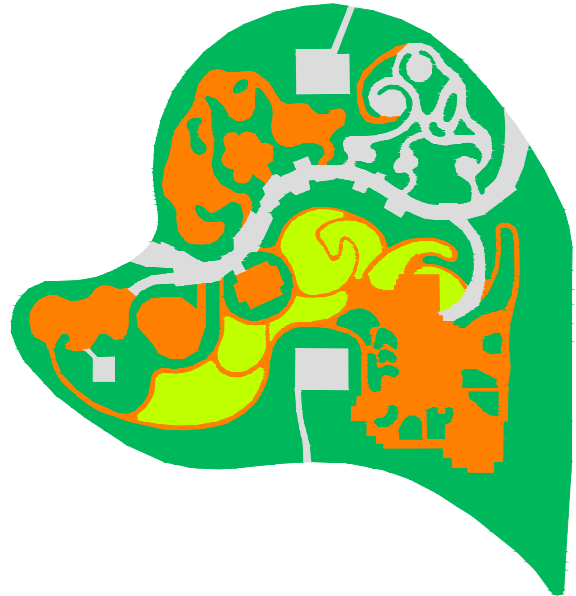
BIKE RACK



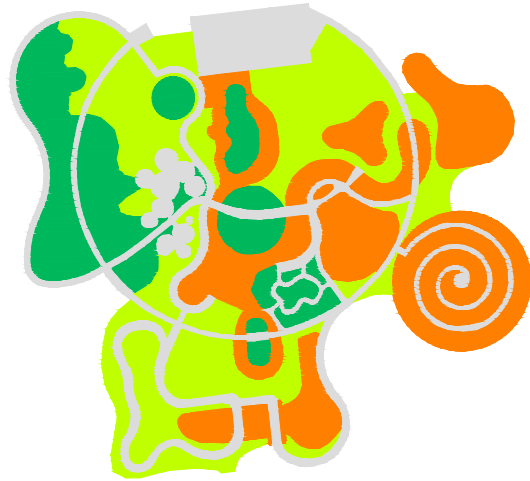
WAYFINDING

SITE INVENTORY & ANALYSIS

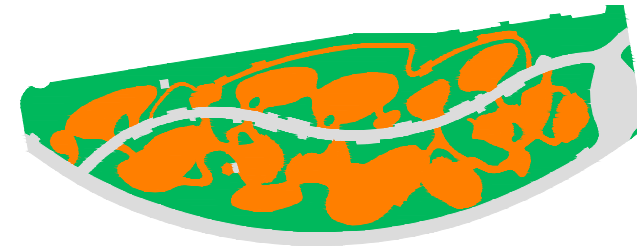
Scale Comparison



MAGGIE DALEY PARK
Chicago



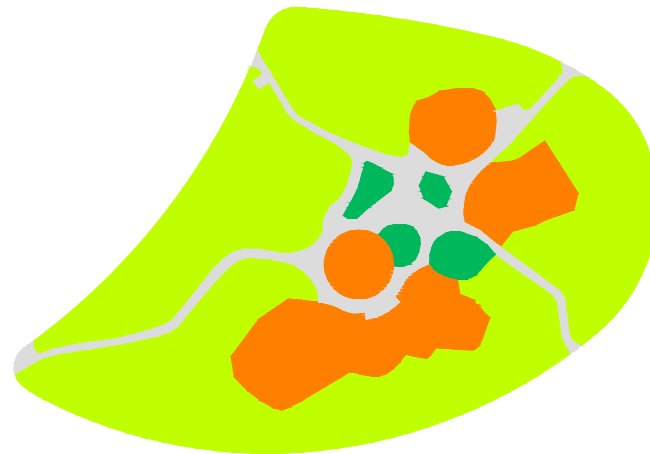
**VALBYPARKEN
NATURE PLAYGROUND**
Copenhagen, Denmark



**OUTPOST AT PRESIDIO
TUNNEL TOPS**
San Francisco



**ROYAL PARK
NATURE
PLAYGROUND**
Parkville, Australia



HOLLIDAY PARK
Indianapolis

ENGAGEMENT



RUNDELL ERNSTBERGER ASSOCIATES

Rundell Ernstberger Associates | Holliday Park Playground Design Workshop

ENGAGEMENT

Pre-Workshop Input



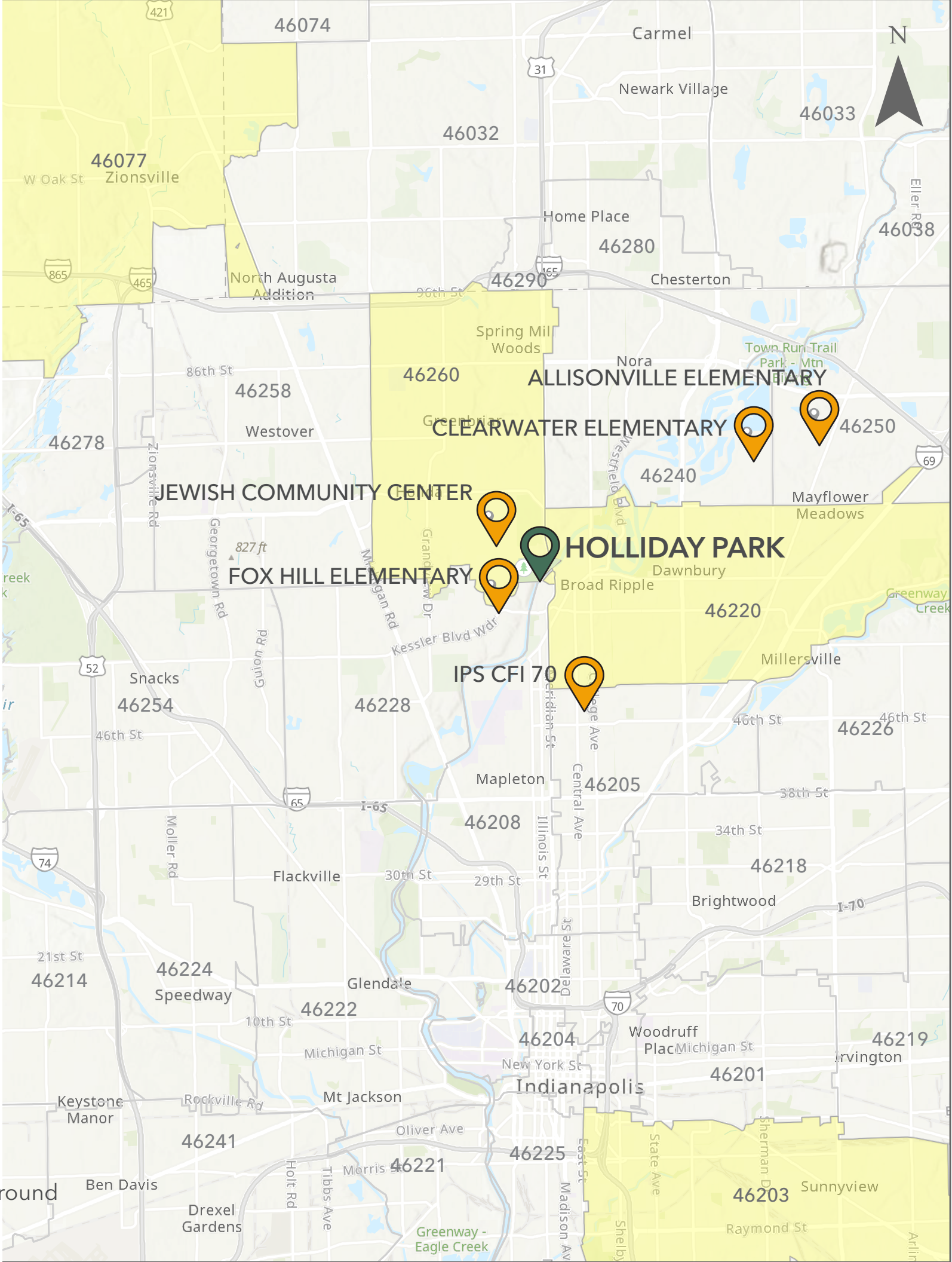
ENGAGEMENT

Public Meeting



ENGAGEMENT

Feedback



DESIGN WORKSHOP



Rundell Ernstberger Associates | Holliday Park Playground Design Workshop

DESIGN WORKSHOP

Day 1: Focus Groups



- **Holliday Park Foundation Board**
- **Parenting**
 - Midtown Parents FB Group
 - Indy's Child Magazine
- **Neighborhood Associations**
- **Park/Playground History**
- **Inclusive Play**

An aerial photograph of Holliday Park, showing a large green area with a winding path, a body of water, and surrounding residential areas. The image is overlaid with a semi-transparent green filter.

DESIGN WORKSHOP

What We Heard | Major Themes

1. Reflect Holliday Park's natural setting
2. Incorporate creative and imaginative play features and activities
3. Accommodate connected and dedicated age-appropriate play spaces
4. Increase awareness of and connectivity to other park areas
5. Create a pleasant, comfortable, and accessible visitor experience
6. Establish a signature, destination play experience & gathering space

An aerial photograph of Holliday Park, showing a large green area with a winding path, a pond, and surrounding residential areas. The image is slightly faded to serve as a background for the text.

DESIGN WORKSHOP

What We Heard | Specific Ideas

1. Reflect Holliday Park's natural setting

- i. Preserve trees and natural elements
- ii. Reuse park materials in new capacities (granite, stone, etc.)
- iii. Feature nature-themed play opportunities
- iv. Present soft educational opportunities and features

"Everybody feels like this is their park."

An aerial photograph of Holliday Park, showing a large green area with a winding path, a body of water on the right, and surrounding residential areas. A semi-transparent design overlay is visible, featuring a circular structure and various lines and shapes that suggest a playground layout.

DESIGN WORKSHOP

What We Heard | Specific Ideas

2. Incorporate creative and imaginative play features and activities

- i. Include a variety of swings and slides
- ii. Incorporate sand pit, water, fort-building and other cooperative play activities/features
- iii. Include sensory play and tactile equipment
- iv. Include a variety of rope and climbing structures
- v. Incorporate a zipline play feature

An aerial photograph of a park area, showing a large pond, surrounding trees, and some buildings in the distance. The image is used as a background for the slide.

DESIGN WORKSHOP

What We Heard | Specific Ideas

3. Accommodate connected and dedicated age-appropriate play spaces

- i. Create a sense of enclosure in play pods with defined entry /exit points, boundaries
- ii. Create opportunities for “homebase” stations with unobstructed sightlines to play pods
- iii. Incorporate all-age play features/spaces

“I would like to be able to see all areas of the playground from the same spot.”

An aerial photograph of Holliday Park, showing a large green area with a winding river, various trails, and some buildings. A semi-transparent design overlay is visible, showing a circular path and some rectangular areas. The text is overlaid on the right side of the image.

DESIGN WORKSHOP

What We Heard | Specific Ideas

4. Increase awareness of and connectivity to other park areas

- i. Incorporate wayfinding and park amenities signage
- ii. Enhance connectivity to other areas of Holliday Park, including the river, trails, nature center, and ruins
- iii. Incorporate walking and fitness circuits
- iv. Create a new connection to Ruins parking lot
- v. Incorporate a Park Information hub

"We need a place to station ourselves, have lunch during our visit."

An aerial photograph of Holliday Park, showing a large green area with a winding path, a pond, and surrounding residential areas. A semi-transparent design overlay is present, featuring a grid of circles and lines that define various zones and paths across the park. The text is overlaid on this design.

DESIGN WORKSHOP

What We Heard | Specific Ideas

5. Create a pleasant, comfortable, and accessible visitor experience

- i. Upgrade entry experience from parking lot
- ii. Improve amenities for caregivers, including seating and gathering areas near play pods
- iii. Improve visibility and sightlines for caregivers
- iv. Increase shaded seating and rest areas
- v. Incorporate drinking fountain and water bottle filling stations
- vi. Expand and organize picnic tables and seating areas
- vii. Improve trash management and incorporate coal disposal
- viii. Provide accessible restrooms and changing stations
- ix. Incorporate outdoor fitness equipment

"This is the best park for shade." And "The playground is hot when the sun is out."

"We need more accessible surface."

An aerial photograph of Holliday Park, showing a large green lawn, a winding path, and a body of water. A semi-transparent design overlay is visible, featuring a circular structure and a path. The text "Shoot for the moon on this one!" is written in white on the left side, and "When will this be done?" is written in white at the bottom left.

DESIGN WORKSHOP

What We Heard | Specific Ideas

6. Establish a signature, destination play experience & gathering space

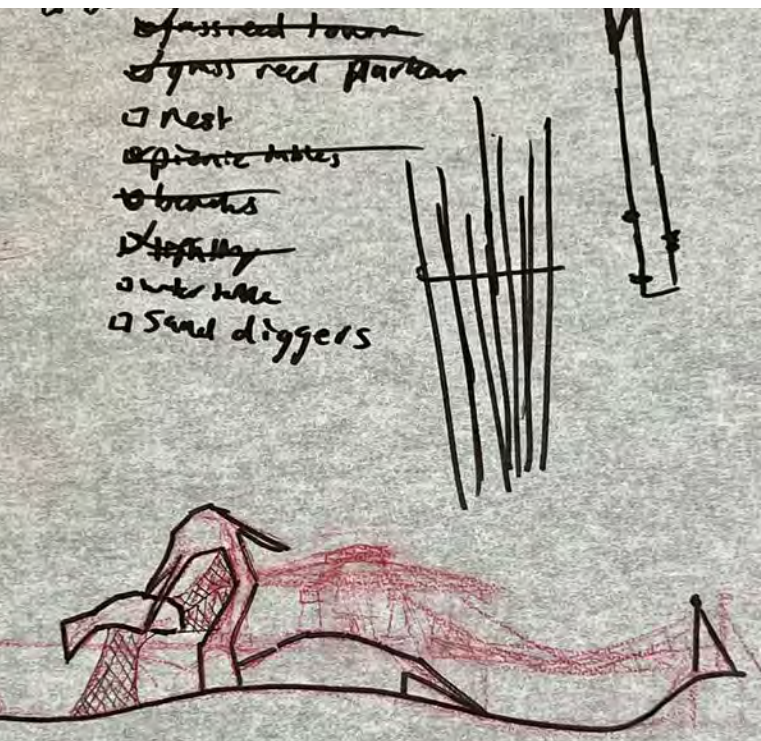
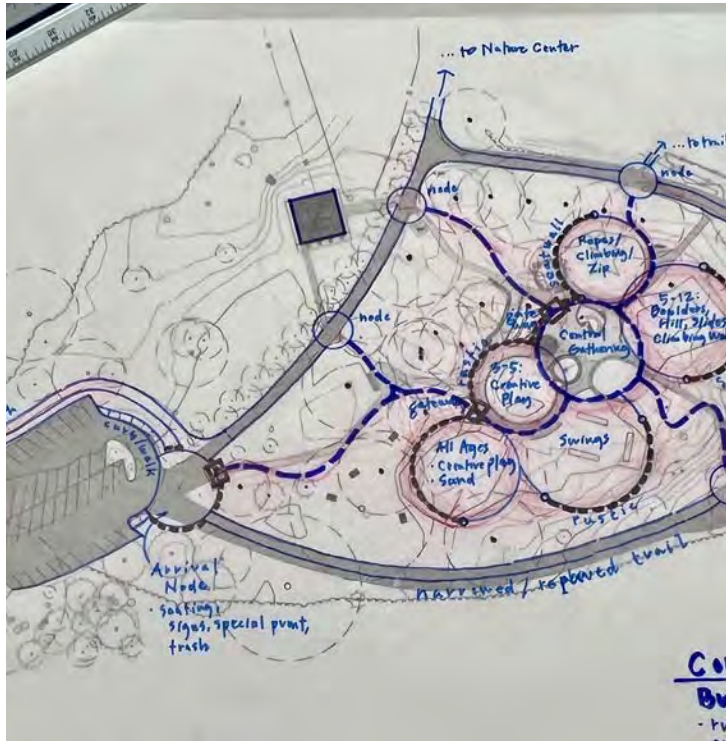
- i. Play to Holliday Park's strengths and defining features
- ii. Take advantage of topographic variations
- iii. Include park history and connection to the community
- iv. Incorporate year-round, all-weather activities
- v. Include open and flex lawn area
- vi. Update playground surfacing

***"Shoot for the
moon on this one!"***

"When will this be done?"

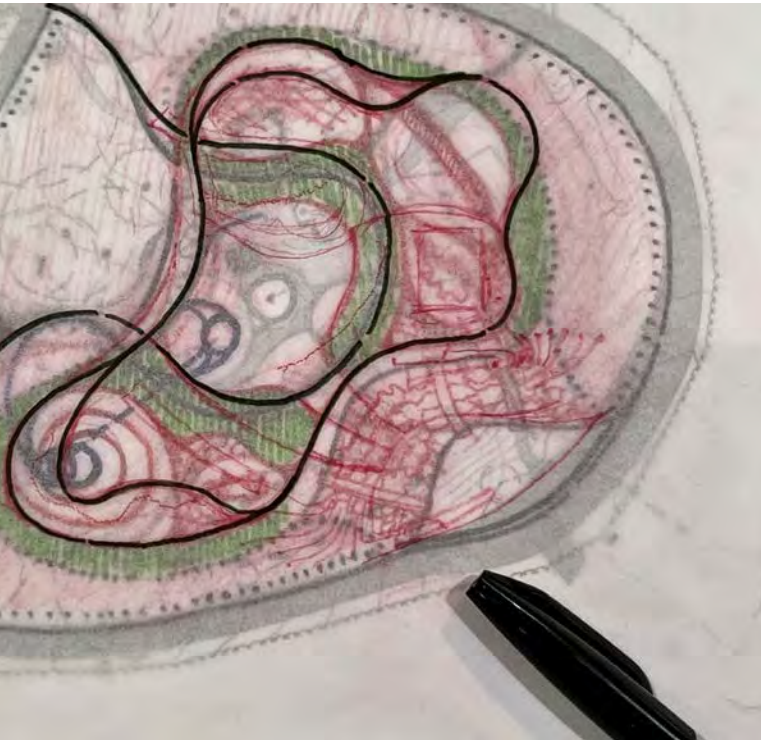
DESIGN WORKSHOP

Days 2 & 3: Concept Development



DESIGN WORKSHOP

Days 2 & 3: Concept Development

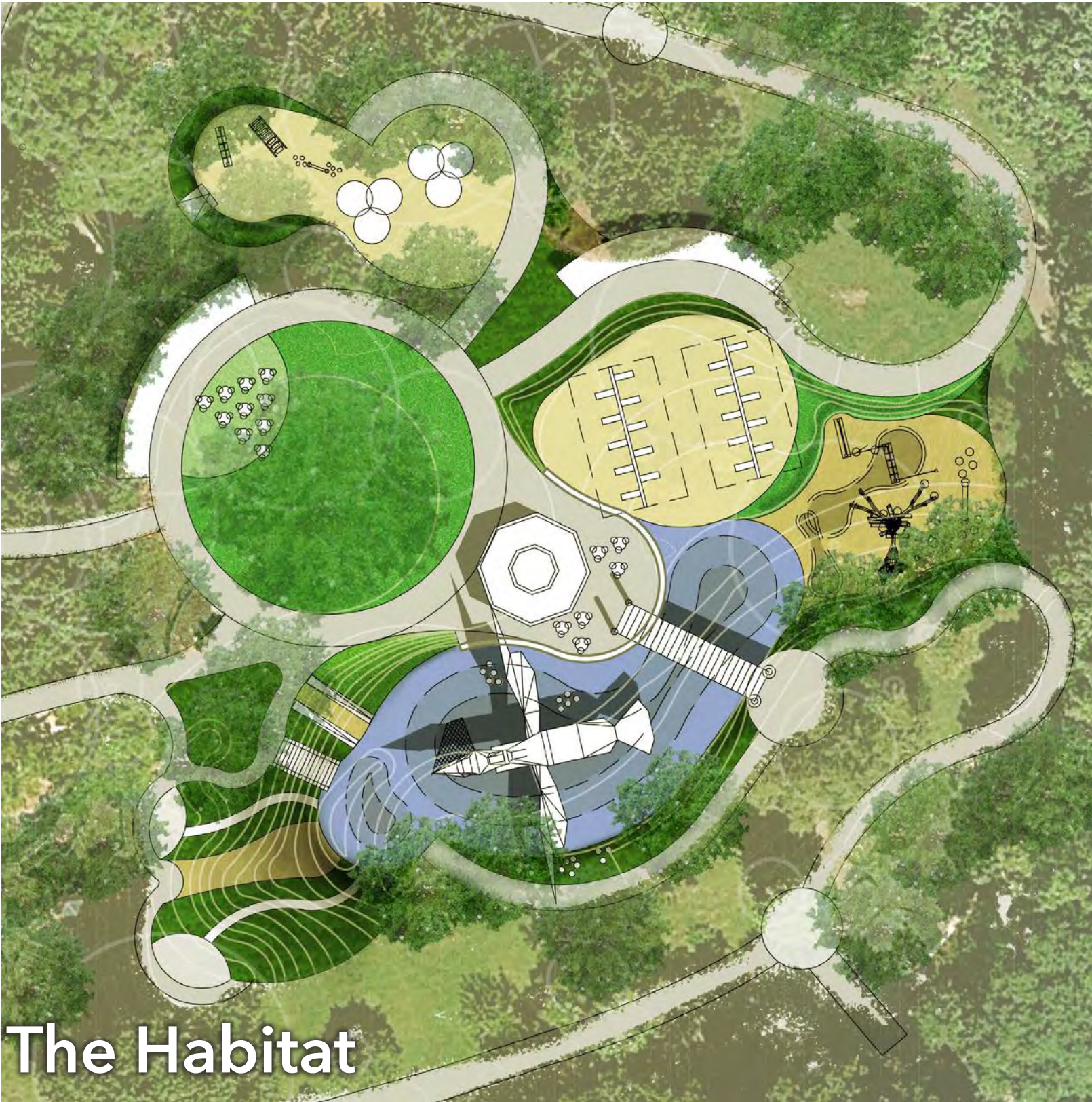


CONCEPTUAL ALTERNATIVES



RUNDELL ERNSTBERGER ASSOCIATES

CONCEPTUAL ALTERNATIVES



CONCEPTUAL ALTERNATIVES

The Refuge

REA

RUNDELL ERNSTBERGER ASSOCIATES



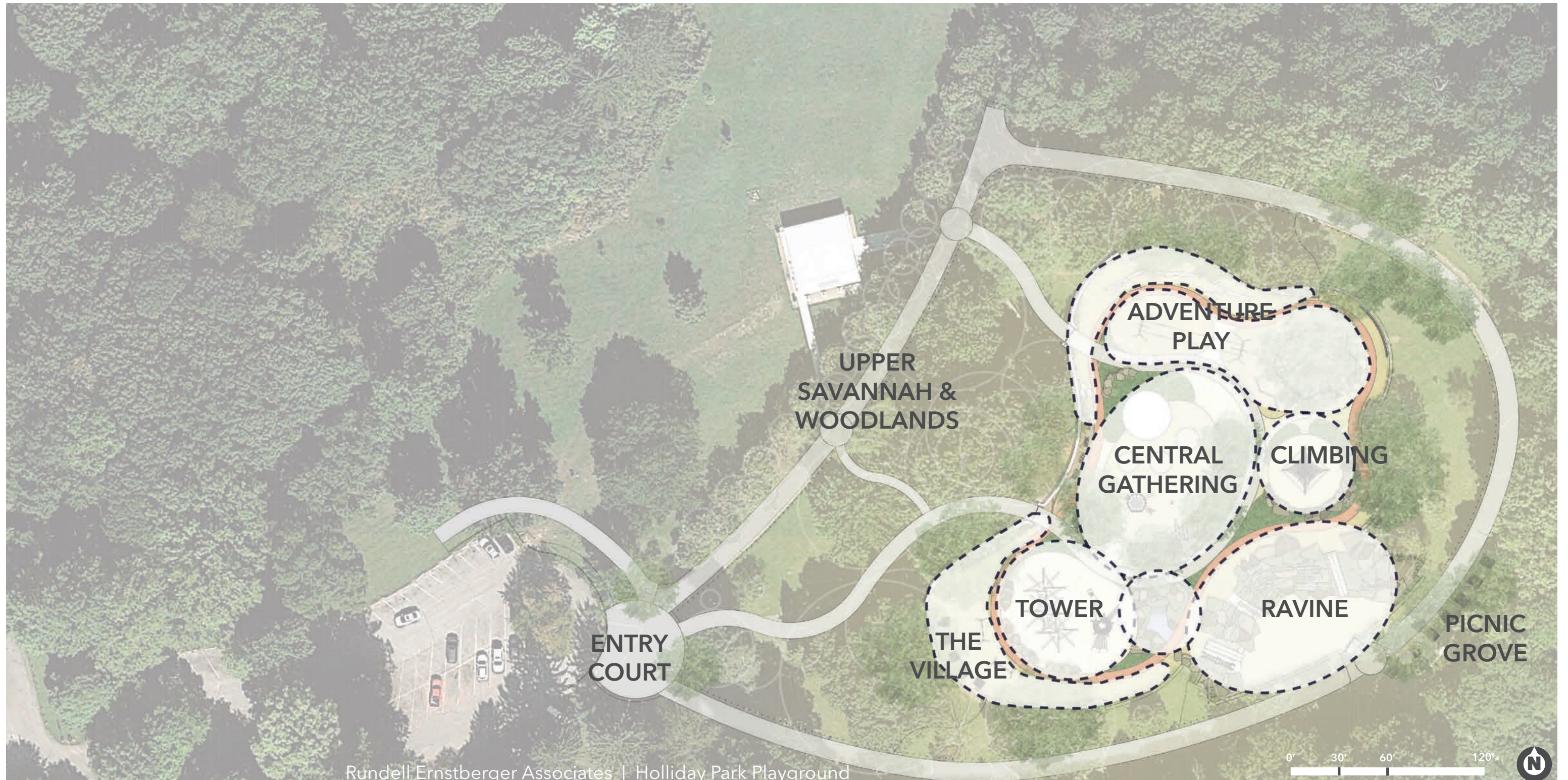
CONCEPTUAL ALTERNATIVES

The Refuge | Narrative

- 1. Reflect the playground's history while looking to its future**
- 2. Signature destination play experience unlike any place in the region**
- 3. Strong focus on creative/imaginative play with an overall natural aesthetic**
- 4. Enhanced visitor experience including improved circulation/connectivity, wayfinding, artwork, seating options, central gathering, and habitat restoration**

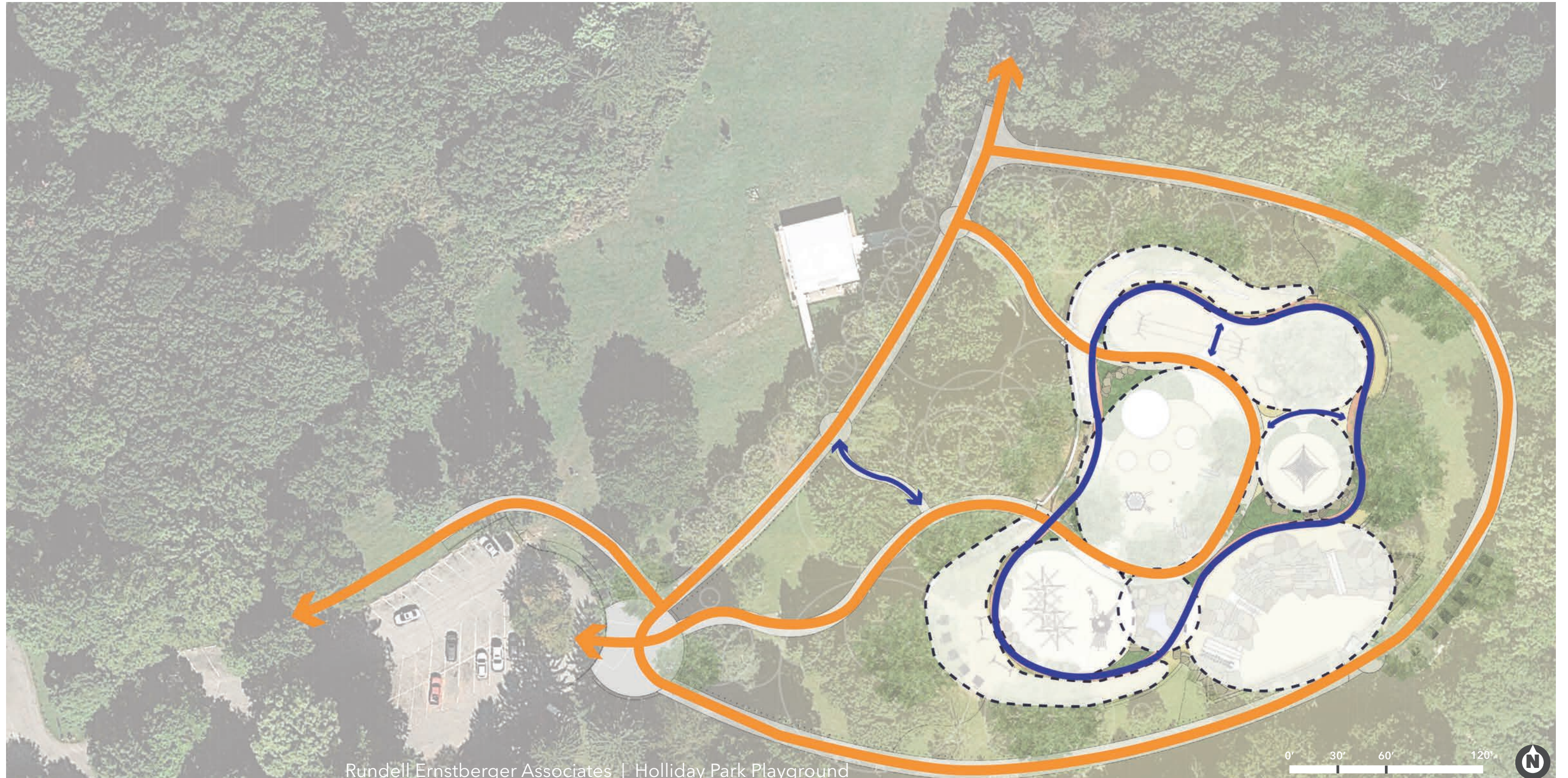
CONCEPTUAL ALTERNATIVES

The Refuge | Framework Diagram - *Spaces*



CONCEPTUAL ALTERNATIVES

The Refuge | Framework Diagram - *Circulation*



CONCEPTUAL ALTERNATIVES

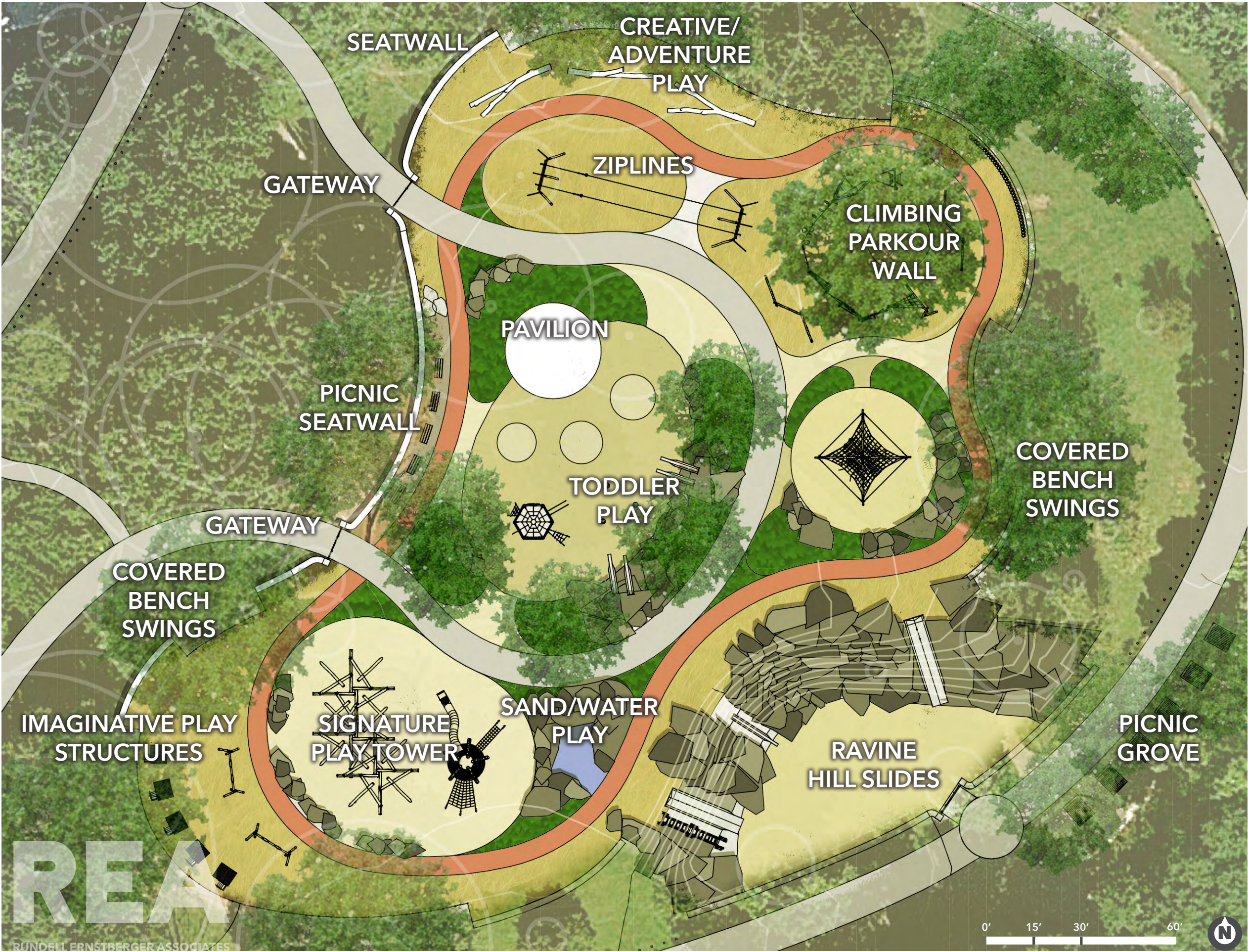
The Refuge | Plan Rendering



CONCEPTUAL
ALTERNATIVES

The Refuge

Plan
Enlargement





REA

RUNDELL ERNSTBERGER ASSOCIATES



REA

RUNDELL ERNSTBERGER ASSOCIATES

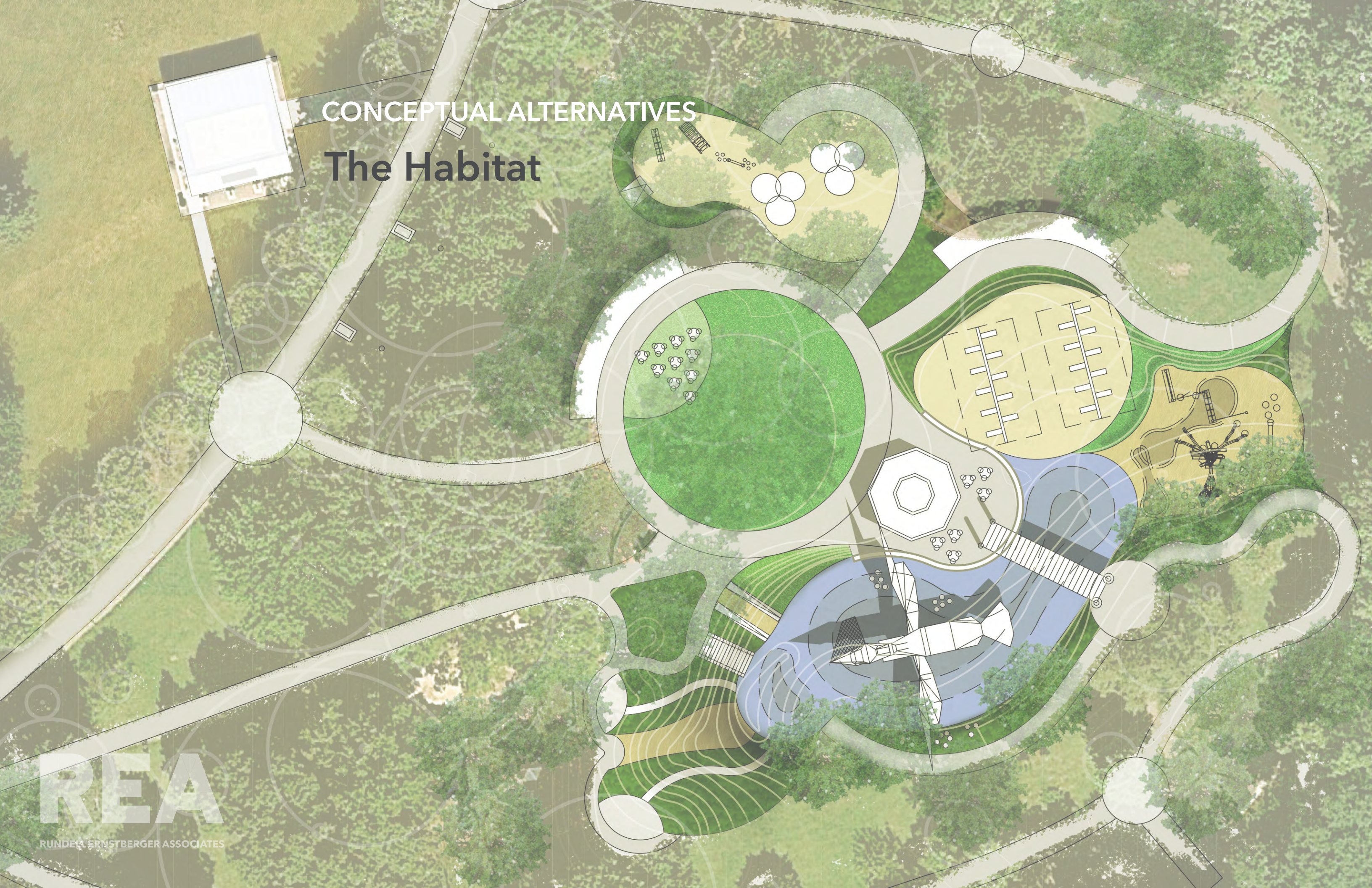


REA

RUNDLE ERNSTBERGER ASSOCIATES

CONCEPTUAL ALTERNATIVES

The Habitat



AREA

RUNDE & ERNSTBERGER ASSOCIATES

CONCEPTUAL ALTERNATIVES

The Habitat | Narrative

- 1. Immerse children and families in a native-inspired play ecosystem**
- 2. Provide a variety of habitat-themed spaces associated with Indiana and Holliday Park**
- 3. A unique, destination play space and outdoor experience**
- 4. Respect and emphasize existing natural setting with trees and topography**

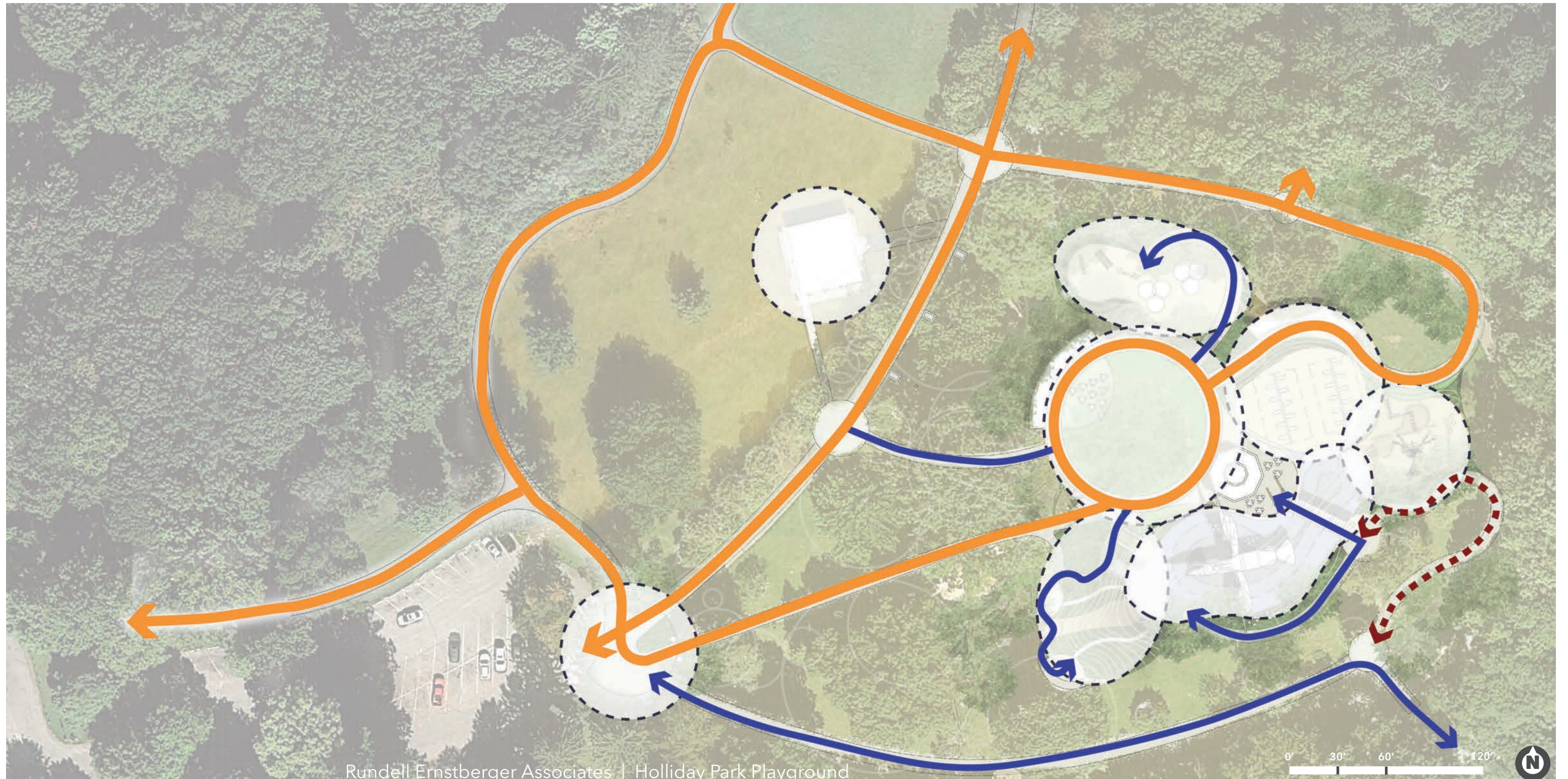
CONCEPTUAL ALTERNATIVES

The Habitat | Framework Diagram - *Spaces*



CONCEPTUAL ALTERNATIVES

The Habitat | Framework Diagram - *Circulation*



CONCEPTUAL ALTERNATIVES

The Habitat | Plan Rendering



CONCEPTUAL
ALTERNATIVES

The Habitat Plan Enlargement





REA

RUNDELL ERNSTBERGER ASSOCIATES



REA

RUNDELL ERNSTBERGER ASSOCIATES



REA

RUNDELL ERNSTBERGER ASSOCIATES

PRECEDENT IMAGERY



RUNDELL ERNSTBERGER ASSOCIATES

Rundell Ernstberger Associates | Holliday Park Playground Design Workshop

PRECEDENT IMAGERY

Holliday Park Character



PRECEDENT IMAGERY

Holliday Park Character



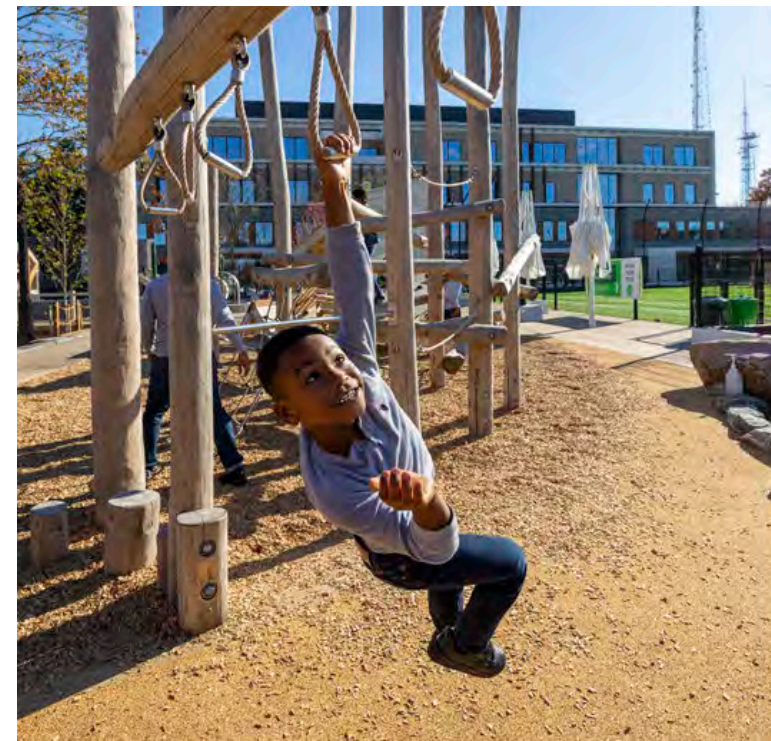
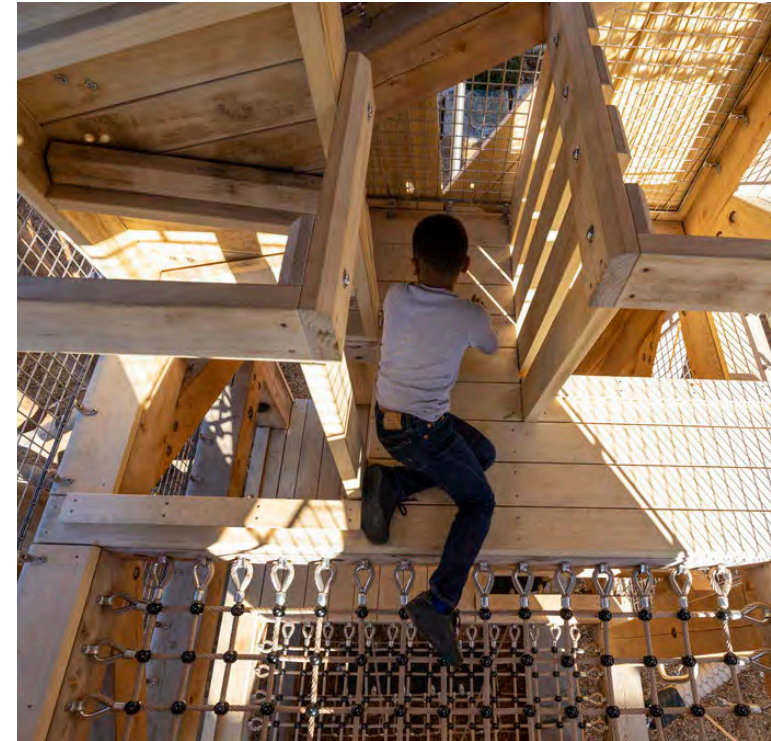
PRECEDENT IMAGERY

Signature Play Structures



PRECEDENT IMAGERY

Signature Play Structures



PRECEDENT IMAGERY

Artistic Play Structures



PRECEDENT IMAGERY

Artistic Play Structures



PRECEDENT IMAGERY

Artistic Play Structures



PRECEDENT IMAGERY

Nature Play



PRECEDENT IMAGERY

Creative/Imaginative Play



PRECEDENT IMAGERY

Inclusive Play



PRECEDENT IMAGERY

Slides



Rundell Ernstberger Associates | Holliday Park Playground

PRECEDENT IMAGERY

Swings



PRECEDENT IMAGERY

Climbing



PRECEDENT IMAGERY

Ropes / Netting



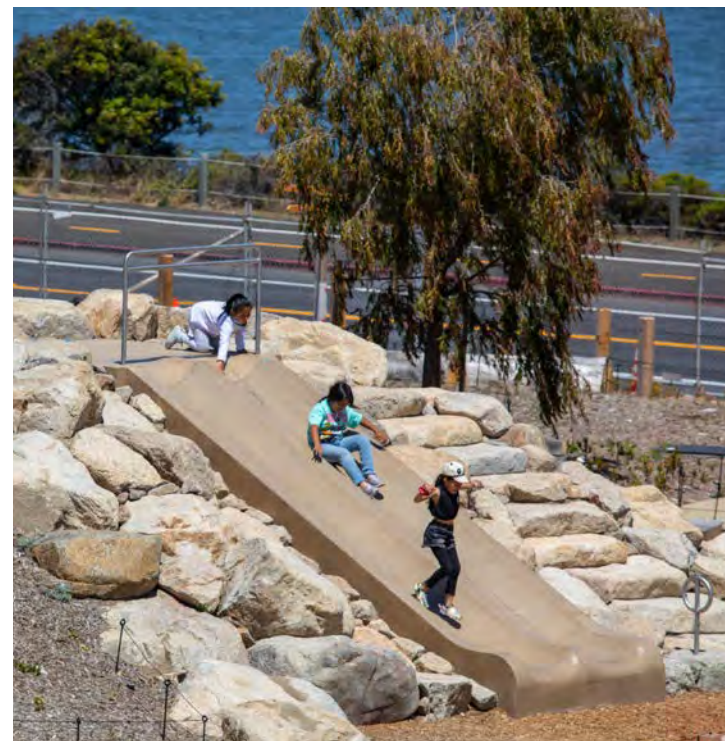
PRECEDENT IMAGERY

Ziplines



PRECEDENT IMAGERY

Hills/Topography/Earthforms



PRECEDENT IMAGERY

Surfacing



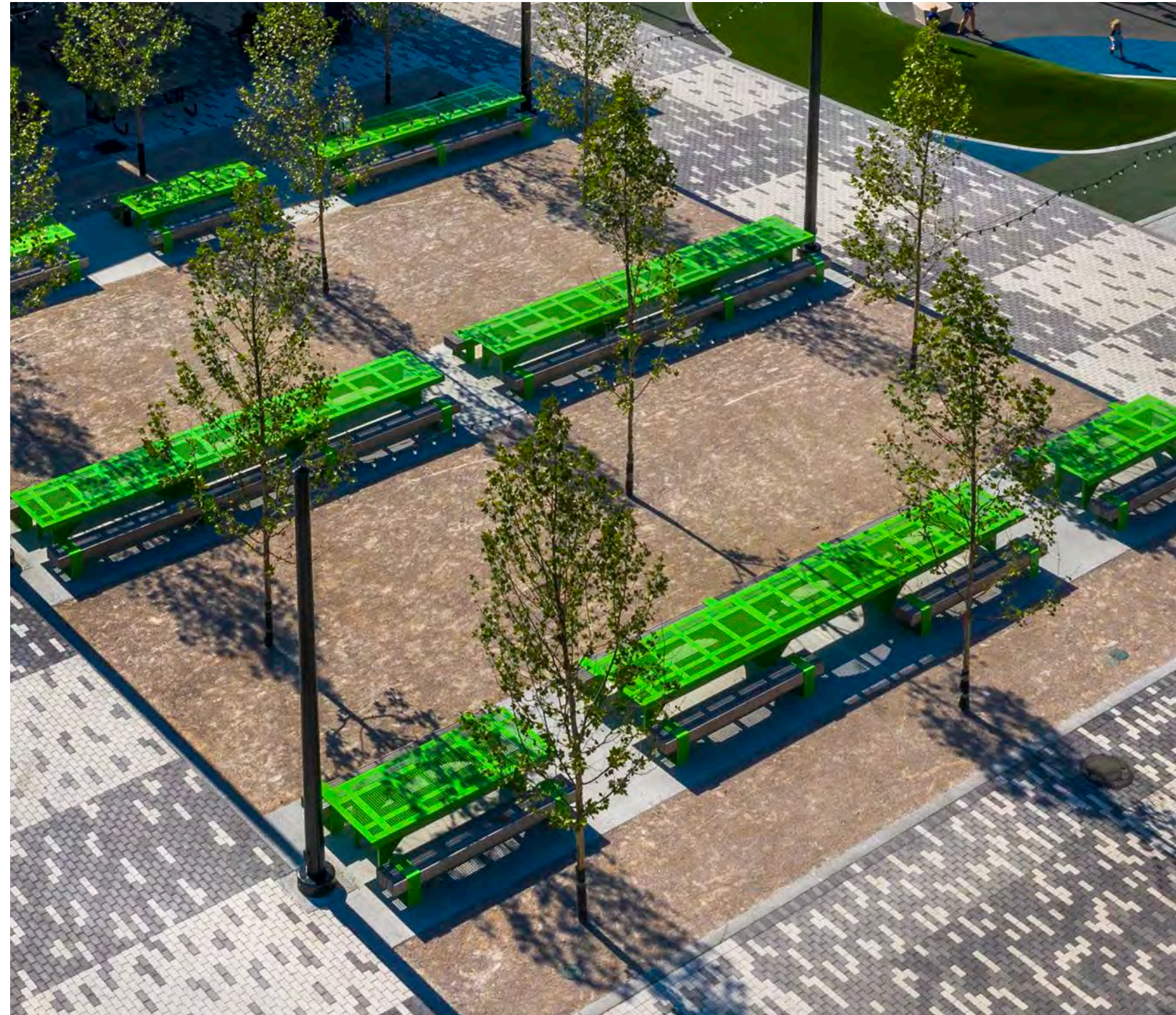
PRECEDENT IMAGERY

Shaded Seating



PRECEDENT IMAGERY

Picnic Area



PRECEDENT IMAGERY

Wayfinding/Interpretive Signage



DISCUSSION

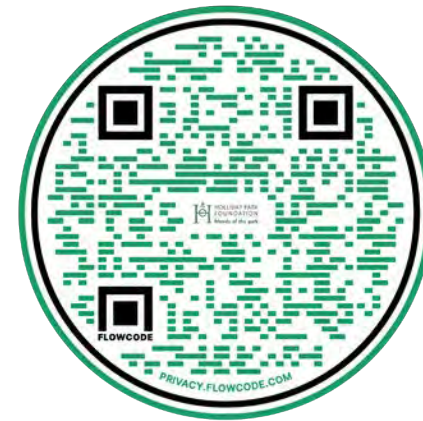


HOLLIDAY PARK PLAYGROUND

For Additional Information:

PROJECT WEBSITE

hollidaypark.org/plan-your-visit/playground/



EMAIL

Adam Barnes

Holliday Park Foundation
abarnes@hollidaypark.org

Alan Rosenwinkel

Rundell Ernstberger Associates
arosenwinkel@reasite.com



RUNDELL ERNSTBERGER ASSOCIATES

Rundell Ernstberger Associates | Holliday Park Playground Design Workshop

